



THE  
VIENNA UNIVERSAL EXHIBITION  
OF  
1873.

---

VICTORIA, AUSTRALIA.

OFFICIAL CATALOGUE OF EXHIBITS.

*DITISSIMA TERRA.*

---

Melbourne :

PRINTED FOR THE COMMISSIONERS BY

MASON, FIRTH, & M'CUTCHEON, 51 & 53 FLINDERS LANE WEST.

MDCCCLXXIII.

TW-Bibl  
WA 88

W. B. Inv.

No 59

WA 88



Inv. #<sup>no</sup> 4229

THE  
VIENNA UNIVERSAL EXHIBITION  
OF  
1873.

---

VICTORIA, AUSTRALIA.

OFFICIAL CATALOGUE OF EXHIBITS.

---

*DITISSIMA TERRA.*

---

Melbourne:

PRINTED FOR THE COMMISSIONERS BY  
MASON, FIRTH, & M'CUTCHEON, 51 & 53 FLINDERS LANE WEST.

MDCCLXXIII.

VIENNA UNIVERSITY LIBRARY

VICTORIA UNIVERSITY LIBRARY

UNIVERSITY OF TORONTO LIBRARY

## ROYAL COMMISSIONERS FOR VICTORIA.

---

Sir Wm. FOSTER STAWELL, Knt., Chief Justice.	CHARLES E. BRIGHT, Esq.
Sir REDMOND BARRY, Chairman of Commission.	The Rev. J. I. BLEASDALE, D.D.
The Hon. C. GAVAN DUFFY, M.P.	W. W. WARDELL, Esq.
The Hon. W. M. K. VALE, M.P.	SAMUEL RAMSDEN, Esq.
The Hon. HOWARD SPENSLEY, M.P.	GEORGE BENCRAFT, Esq.
The Hon. W. H. F. MITCHELL, M.L.C.	PAUL DE CASTELLA, Esq.
The Hon. Sir FRANCIS MURPHY.	THOMAS LAMBERT, Esq.
The Hon. C. J. JENNER, M.L.C.	HUGH PARKER, Esq.
The Hon. R. C. HOPE, M.L.C.	MATTHEW M'CAW, Esq.
The Hon. T. H. FELLOWS, M.P.	SAMUEL SEXTUS RITCHIE, Esq.
The Hon. S. H. BINDON.	The Hon. ROBERT RAMSAY, M.P.
The Hon. J. T. SMITH, M.P.	JAMES B. PATTERSON, Esq., M.P.
JAMES MACBAIN, Esq., M.P.	ORLANDO FENWICK, Esq.
WILLIAM WILLIAMS, Esq., M.P.	The Hon. Sir GEO. F. VERDON, K.C.M.G., C.B.
JOSEPH JONES, Esq., M.P.	The Hon. J. O'SHANASSY, M.L.C., C.M.G.
The COUNT DE CASTELNAU.	T. J. SUMNER, Esq.
D. C. MACARTHUR, Esq.	EMIL THONEMAN, Esq.
	THOMAS O'GRADY, Esq.

GEORGE COLLINS LEVEY, Secretary.

STATE OF NEW YORK

1880

1881

1882

# INDEX TO CATALOGUE.

---

## DIVISION I.—FINE ARTS.

	PAGE
SECTION 1.—Oil Paintings ... ..	7
"  2.—Photographs ... ..	7
"  3.—Miscellaneous ... ..	8

## DIVISION II.—MANUFACTURES.

SECTION 1.—Woollen Manufactures ... ..	9
"  2.—Steel Manufactures ... ..	9
"  3.—Agricultural ... ..	9
Class 1.—Machinery ... ..	9
"  2.—Dairy ... ..	10
"  3.—Grain, Cereals, and Pulse... ..	10
"  4.—Roots, Fruits, and Seeds ... ..	10
SECTION 4.— ... ..	12
Class 1.—Chemicals ... ..	12
"  2.—Groceries ... ..	14
"  3.—Preparations of Food ... ..	14
SECTION 5.—Wines and Spirits ... ..	15
Class 1.—Wine ... ..	15
"  2.—Spirits ... ..	18

## DIVISION III.

SCIENTIFIC INVENTIONS AND NEW DISCOVERIES ... ..	18
--	----

## DIVISION IV.—RAW PRODUCE.

SECTION 1.—Leather ... ..	19
"  2.—Wool ... ..	19
"  3.—Wood ... ..	20
"  4.—Ores and Coal ... ..	21
Class 1.—Ores ... ..	21
"  2.—Coal ... ..	21
SECTION 5.—Mineralogical and Geological Specimens ... ..	21
"  6.—Natural History ... ..	30
"  7.—Aborigines and Ethnology ... ..	31

INDEX TO CATALOGUE

General Information

1. Name of the Institution  
2. Location  
3. Date of Publication

Classification

1. Mathematics  
2. Natural Sciences  
3. Social Sciences  
4. Literature  
5. History  
6. Law  
7. Medicine  
8. Agriculture  
9. Arts  
10. Miscellaneous

Subject Index

1. Algebra  
2. Geometry  
3. Trigonometry  
4. Calculus  
5. Statistics  
6. Physics  
7. Chemistry  
8. Botany  
9. Zoology  
10. Anthropology  
11. Sociology  
12. Psychology  
13. Economics  
14. Political Science  
15. Law  
16. Medicine  
17. Agriculture  
18. Arts  
19. Miscellaneous

THE  
VIENNA UNIVERSAL EXHIBITION, 1873.

—♦—  
THE VICTORIAN DEPARTMENT.  
—♦—

O F F I C I A L  
CATALOGUE OF EXHIBITS.

—♦—  
DIVISION I.—FINE ARTS.  
—♦—

SECTION 1.—OIL PAINTINGS.

GUERARD, JOHN EUGENE VON, Gipps-street, East Melbourne.

- 1 "Rocks off Cape Woolomai, Phillip Island"
- 2 "Summit of Mount Kosciusko, Australian Alps"

—♦—  
SECTION 2.—PHOTOGRAPHS.

BARDWELL, WM., Ballarat.

- 3 Photographic Views of Ballarat and District

BOCK, ALFRED, Foster-street, Sale.

- 4 Photographic Views of Sale and District

CAROLIN, J. P., Kyneton.

- 5 Photographic Views of Kyneton and District

COLAC SHIRE COUNCIL, Colac.

- 6 Photographic Views of Shire of Colac

CORIO SHIRE COUNCIL, CORIO.

- 6A Photographic Views of the Shire.

CORNELL, F., Bairnsdale.

- 7 Photographic Views of Bairnsdale and District

## HARVEY &amp; DIMDEN, Geelong.

- 8 Photographic Views of Geelong

INTERCOLONIAL EXHIBITION, COMMISSIONERS OF,  
Melbourne.

- 9 Photographic Views of the Colony

## KOROIT BOROUGH COUNCIL, Koroit.

- 10 Photographic Views of Borough of Koroit

## LANDS DEPARTMENT, Melbourne.

- 11 Photographic Views of Melbourne, by John Noone

## MOSER, H., Daylesford.

- 12 Photographic Views of Creswick and Daylesford

## NEWTOWN &amp; CHILWELL BOROUGH COUNCIL, Geelong.

- 13 Photographic Views of the Borough of Newtown and
- 
- Chilwell

## NORTON, JOHN, Geelong.

- 14 Photographic Views of Geelong and Neighbourhood.

## PUBLIC LIBRARY, TRUSTEES OF, Melbourne.

- 15 Photographs of the Dresden Gallery, bound in morocco, gilt,
- 
- photographed by John Noone, Public Lands Department

## PUBLIC WORKS, INSPECTOR-GENERAL OF, Melbourne.

- 16 Photograph of the Melbourne Post Office

- 17 Photograph of the Royal Mint, Melbourne

## SANDHURST CITY COUNCIL, Sandhurst.

- 18 Photographic Views of the City of Sandhurst

## ST. KILDA BOROUGH COUNCIL, ST. KILDA.

- 18A Photographic Views of the Borough.

## STRATHFIELDSAYE SHIRE COUNCIL, Strathfieldsaye.

- 19 Photographic Views of the Shire of Strathfieldsaye

## SECTION 3.—MISCELLANEOUS.

## BLEASDALE, REV. J. I., D.D.

- 19A On Colonial Wines, a Paper read before the Royal Society
- 
- of Victoria

- 19B New Industries.—The Olive, the Sweet Chesnut, Fig Trees
- 
- and Figs

INTERNATIONAL EXHIBITION, COMMISSIONERS OF,  
Melbourne.

- 20 Victorian Sovereigns and Half Sovereigns, coined at the Royal Mint, Melbourne
- 21 Catalogue of the Models in the National Museum, Melbourne
- 22 Volume of Newspapers, published in Victoria
- 23 Volume of Wood Engravings, published in Victoria
- 24 The Land Act of Victoria, 1869
- 25 The Census of Victoria
- 26 Report of the Board of Education

## LANDS DEPARTMENT, Melbourne.

- 27 Maps of the Colony of Victoria
- 28 Geodetic Plans of the Colony of Victoria

## PUBLIC LIBRARY, Melbourne.

- 29 Catalogue of the Public Library, 2 vols.
- 30 Catalogue of the Industrial and Technological Museum

WITTBER, AUGUST, Gipps-street, East Melbourne.

- 31 Australische Deutsche Zeitung

**DIVISION II.—MANUFACTURES.**

## SECTION 1.—WOOLLEN MANUFACTURES.

GRAY, ALEXANDER, &amp; CO., Albion Woollen Mills, Geelong.

- 32 Woollen Tweeds, manufactured at Geelong
- 33 Woollen Shawl, manufactured at Geelong

VICTORIAN WOOLLEN COMPANY, Geelong.

- 34 Woollen Tweeds, manufactured at Geelong
- 35 Woollen Shawls, manufactured at Geelong

## SECTION 2.—STEEL MANUFACTURES.

MACLEAN, ANGUS, Little Bourke-street, Melbourne.

- 36 Ornamental Zinc Work

MAJOR, JAMES, 82 Collins-street West, Melbourne.

- 37 Bell, cast from the Iron manufactured by the Ilfracombe Iron Company

## SECTION 3.—AGRICULTURAL.

## CLASS 1.—MACHINERY.

TYNAN, JOHN, Ballarat.

- 38 Double-wheel Plough

## CLASS 2.—DAIRY.

MATHEWS, WILLIAM, Coghill's Creek.

39 Cheese

WATSON &amp; PATERSON, Bourke-street West, Melbourne

40 Hams

41 Bacon

## CLASS 3.—GRAIN, CEREALS, AND PULSE.

BUCKLEY, EDWARD, Newbridge.

42 Wheat

BURSTON, S., &amp; CO., 123 Flinders-street East, Melbourne.

43 Barley

GOULBURN SHIRE COUNCIL, Goulburn.

44 Wheat

MATTHEWS, WM., Coghill's Creek.

45 Oats

46 Red Straw Wheat

## CLASS 4.—ROOTS, FRUITS, AND SEEDS.

INTERNATIONAL EXHIBITION (COMMISSIONERS OF),  
Melbourne.Facsimiles of Victorian-grown Fruits, consisting of—The  
Citrus or Orange tribe, Cherries, Figs, Pears, Straw-  
berries, Plums, Mulberries, and Loquats, viz.:—

- 47 Small-fruited Shaddock
- 48 West Indian Lime
- 49 Citron
- 50 Cole's Seedling Citron
- 51 Lemon
- 52 Wild Lemon
- 53 Persian Sweet Lemon
- 54 Bergamot
- 55 Siletta Orange (No. 1)
- 56 St. Michael's Orange
- 57 Teneriffe Orange
- 58 Poor Man's Orange
- 59 Blood Orange
- 60 Seville Orange
- 61 Mandarin Orange
- 62 Cluster Orange

- 63 Five-quartered Orange
- 64 Siletta Orange (No. 2)
- 65 Parramatta Orange
- 66 Twyford Bigarreau Cherry, a Victorian seedling
- 67 Clio Cherry, a Victorian seedling
- 68 Monarch Cherry, a Victorian seedling
- 69 Rockport Bigarreau Cherry
- 70 Cole's Early Black Guigne Cherry, a Victorian seedling
- 71 Hero Cherry, a Victorian seedling
- 72 Black Bigarreau Cherry
- 73 Florence Cherry
- 74 Governor Wood Cherry
- 75 Ohio Beauty Cherry
- 76 Bigarreau Monstrueux de Mozel Cherry
- 77 Black Tartarian Cherry
- 78 Cole's No. 1 Cherry, a Victorian seedling
- 79 Bigarreau Napoleon Cherry
- 80 Black Heart Cherry
- 81 Scarlet Bigarreau Cherry
- 82 Turkey Bigarreau Cherry
- 83 White Heart Cherry
- 84 St. Margaret Cherry
- 85 Reine Hortense Cherry
- 86 Downton Cherry
- 87 Sparhawk's Honey Cherry
- 88 Aston Cherry
- 89 St. Margaret Cherry (No. 2 sample)
- 90 Florence Cherry (No. 2 sample)
- 91 La Marguerite Cherry
- 92 De L'Archipel Fig
- 93 St. Dominique Violetta Fig
- 94 St. Dominique Blanche Fig
- 95 Brunswick Fig
- 96 Citron de Carmes Pear
- 97 Doyenne D'Ete Pear
- 98 Trollope's Victoria Strawberry
- 99 Trollope's Victoria Strawberry (No. 2 sample)
- 100 St. Etienne Plum
- 101 Yellow Cherry Plum
- 102 Cherry Plum
- 103 Damson Prune Plum
- 104 Blue Violet Plum
- 105 Early Admirable Plum
- 106 Early Orleans Plum
- 107 Pricoce de Tours Plum

- 108 Early Rivers Plum  
 109 Angelina Burdett Plum  
 110 Peach Plum  
 111 Black Mulberry  
 112 Black Mulberry (Morin Moretti)  
 113 Loquats

## SECTION 4.

## CLASS I.—CHEMICALS.

BOSISTO, JOSEPH, Richmond.

Chemical and Pharmaceutical Preparations from Australian Vegetation.

*Eucalyptus Globulus*, or Blue Gum

- 114 Ol. Eucalypti Globuli; C 12, H 40, O.—Therapeutic uses: antiseptic, useful in putrid fevers and fœtid suppurations; also has been successfully employed for embalming
- 115 Liquor Eucalypti Globuli possesses valuable antiperiodic properties. In China it is stated to counteract malaria, without exerting the prejudicial effects of quinine on the nervous system; recommended also in cases of chronic bronchitis, catarrh of the stomach, &c.
- 116 Eucalyptol C 12, H 20, O, for inhalation. Therapeutic uses: antiseptic, stimulant
- 117 Tinctura Eucalypti Globuli. Therapeutic use: tonic
- 118 Foliæ, prepared carefully for export. Therapeutic use; cataplasm

*Eucalyptus Amygdalina Odorata*

- 120 Ol. Eucalypti Amygdalinæ Odorata. The Eucalyptus Oil of commerce, a volatile oil of a sweet aromatic aroma and possessing a clean basic odour; it yields up its own identity on the addition of the more costly ottos in consonance with it, renders its utility in the employment of scenting soaps to be something considerable. Sp. grav. 0.881.
- 121 Liquor Eucalypti Amygdalinæ. Its properties similar to the Globuli, but weaker
- 122 Tinctura Eucalypti Amygdalinæ. Therapeutic use; antiseptic, tonic
- 123 Gum: Eucalypti Amygdalinæ. Therapeutic use: astringent
- 124 Foliæ, prepared carefully for export. In the form of an infusion 1 in 4; a good disinfectant

*Eucalyptus Oleosa, or Mallee Scrub.*

- 126 Eucalypt Oleosæ. This oil is known in commerce under the name of "oleosa," to avoid error with the other volatile oils of the Eucalypti. It is a powerful solvent, deserving the special notice of varnish manufacturers. It is stated that varnish made with oleosa, in the place of turpentine, does not "bloom." It is twice the price of turpentine. The supply is unlimited.
- 127 Ol. Eucalypti Fissilis
- 128 Ol. Eucalypti Fabrorum
- 129 Ol. Eucalypti Stuartiana
- These three oils are exhibited for the purpose of showing the different characteristics existing in such products from the Eucalypti. They are not commercial.
- 130 Gum: Sideroxylon, or Iron Bark
- 131 Gum: Amygdalinæ, or Peppermint Bark
- 132 Gum: Rostrata, or Redgum Bark
- 133 Gum: Odorata
- 134 Gum: Xanthorrhœa, or Grass-tree
- 135 Ol. Melaleuca Ericifolia, or Tea-tree Oil
- 136 Ol. Melaleuca Genistifolia

*Atherosperma Moschata, or Native Sassafras Bark*

- 138 Ess. Ol. Atherosperm. Mosch. Therapeutic use: diaphoretic, dimetic, and sedative. It exerts a specific lowering influence on the heart's action
- 139 Extract Atherosperm. Mosch. Tonic
- 140 Atherospermine. Tonic
- 141 } Acacia Decumens, or Wattle-tree
- 142 } Essentia, or Wattle Perfume
- 143 Opium, from Papaver Somnifera, yielding 10 per cent. morphia. Grown in Gipps Land, on the farm of G. and A. Turpin, under the direction of the exhibitor. Grown annually as an article of commerce, and much sought after
- 144 Ol. Mentha Piperita, or fine Oil of Peppermint. Grown in Gipps Land, on the farm of G. and A. Turpin, and distilled by the exhibitor. Grown annually, and in increased quantity, as an article of commerce
- 145 Ol. Mentha Sativa, or Spearmint. Grown at Mount Macedon, and distilled by the exhibitor

## LUCAS, ROBERT, Colac.

- 146 Grass-tree Gum, in its crude state  
ROFF & CO., 87 Flinders-lane East, Melbourne.
- 147 Sullivan's Hydrated Double Chloride of Calcium and Aluminum. Prepared from the crystals, non-poisonous and inodorous
- 148 Sullivan's Lotion. Prepared from the crystals
- 149 Sullivan's Disinfectant Powder. Antiseptic, disinfectant, and deodorant

## CLASS 2.—GROCERIES.

LEVI, NATHANIEL, 32 Collins-street West, Melbourne.

- 150 Victorian Beetroot Sugar

LEWIS &amp; WHITTY, Charles-street, Fitzroy, Melbourne.

- 151 Washing Blue

## CLASS 3.—PREPARATIONS OF FOOD.

AUSTRALIAN MEAT-PRESERVING COMPANY, Market-buildings, Melbourne.

- 152 Preserved Meats, consisting of corned beef, roast beef, preserved beef, preserved mutton, ox tongues, sheep's tongues, legs of mutton, roast goose, roast duck, soup and bouilli, kidney soup, ox-tail soup

COOPER &amp; PAYNE, Saltwater River, Melbourne.

- 153 Roast Beef, preserved by the patent syphon vacuo process
- 154 Spiced Beef, preserved by the calcium bath process
- 155 Ox-tail Soup

LITTLE, JOHN, Mount Ararat Meat-preserving Works, Ararat.

- 156 Preserved Meats, made by the vacuo process

MELBOURNE MEAT-PRESERVING CO., Melbourne.

- 157 Preserved Meats, consisting of boiled mutton, spiced beef, boiled beef, soup and bouilli, calves' head and bacon, ox tongues, roast mutton, corned beef, sheep's tongues, seasoned roast mutton, calves' heads, mock-turtle soup, Julienne soup, gravy soup, and stewed kidneys

VICTORIA MEAT-PRESERVING CO., 118 Market-street, Melbourne.

- 158 Preserved Meats and Soups

WESTERN MEAT-PRESERVING CO., Colac.

- 159 Preserved Meats, consisting of Beef, Rabbits, Kangaroo, Game, and Poultry

BENCRAFT, GEORGE, & CO., Little Flinders-st., Melbourne.

160 Maize Meal

HAGENAUER, F. A., Ramahyuck Mission Station, Lake Wellington.

161 Arrowroot, grown at the Ramahyuck Aboriginal Mission Station, Lake Wellington, Gippsland

RAMSDEN, SAMUEL, Carlton.

162 Flour

SMITH & SON, 102 Lonsdale-street East, Melbourne.

163 Charcoal Biscuits

STEWART, M., & Co., Richmond, Victoria.

164 Maizena, manufactured at Richmond

165 Starch, manufactured at Richmond

ZORN, EDWARD, Oakleigh, near Melbourne.

166 Tomato Sauce

## SECTION V.—WINES AND SPIRITS.

### CLASS 1.—WINE.

BEST, JOSEPH, Great Western.

167 White Wine, light, dry, made from Muscat, Chasselas, and Tokay Grapes; vintage 1871

168 White Wine, light, dry, made from White Hermitage, Chasselas, and Reisling Grapes; vintage 1871

169 White Wine, made from Sauvignon Grapes; vintage 1871

170 Red Wine, light, made from Hermitage and Frontignac Grapes; vintage 1870

BRUHN BROTHERS, Emu Creek, Sandhurst.

171 White Wine, light, made from Reisling and Pineau Blanc Grapes; vintage 1866

172 White Wine; vintage 1871

CASTELLA, HUBERT DE, Yering.

173 White Wine, light, made from Chasselas Grapes; vintage 1869

174 Red Wine, full-bodied, made from Sauvignon Grapes; vintage 1871

175 Red Wine, light and dry, made from Hermitage Grapes; vintage 1869

## CRIPPA, FABRIZIO, Hepburn.

- 176 Red Wine, full-bodied, made from Burgundy Grapes ;  
vintage 1871
- 177 Red Wine, light, made from Hermitage Grapes ; vintage  
1870

## DAVIES, JOHN, Moonee Ponds.

- 178 White Wine, light, made from various Grapes ; vintage  
1869

## FALLON, JAMES T., Albury.

- 179 Brown Wine, made from Muscat Grapes
- 180 Dark Wine, dry, made from Burgundy Grapes ; vintage  
1867
- 181 White Wine, dry, made from Reising Grapes ; vintage 1862
- 182 Brown Wine, made from Brown Muscat Grapes
- 183 White Wine, made from Verdeilho Grapes

## FICK, H. K., Campaspe.

- 184 Red Wine, full-bodied, made from Mataro Grapes ; vintage  
1871
- 185 Red Wine, full-bodied, made from Hermitage Grapes ;  
vintage 1871

## FRANCIS, J. G., Sunbury.

- 186 White Wine, full-bodied, made from Gouais Grapes ; vintage  
1869
- 187 Red Wine, full-bodied, made from Hermitage Grapes ;  
vintage 1867
- 188 Red Wine, full-bodied, made from Hermitage Grapes ;  
vintage 1866

## GROSSE, FREDERICK, Sandhurst.

- 189 White Wine, light, made from Reising Grapes ; vintage  
1870
- 190 Red Wine, light, made from Carbinet Sauvignon Grapes ;  
vintage 1870
- 191 Red Wine, full-bodied, made from Hermitage Grapes ;  
vintage 1868

HEINE & GREIFFENHAGEN, Strathfieldsaye, near Sand-  
hurst.

- 192 White Wine, full-bodied, made from Verdeilho Grapes ;  
vintage 1869
- 193 Red Wine, full-bodied, made from Hermitage Grapes ;  
vintage 1871

- 194 Red Wine, full-bodied, made from Carbinet Sauvignon Grapes; vintage 1869

HEINE, AUGUST, Sheepwash, Sandhurst.

- 195 White Wine, light, made from Reisling Grapes; vintage 1868

HOPE, R. C., Lynnburn, Geelong.

- 196 White Wine, light, made from Reisling and Gouais Grapes; vintage 1871

- 197 White Wine, made from Reisling Grapes; vintage 1871

JOHNSTON, J. S., Sunbury.

- 198 Red Wine, full-bodied, dry, made from Hermitage Grapes; vintage 1869

JUNG, OTTO, Chinaman's Creek, Castlemaine.

- 199 Red Wine, full-bodied, made from Hermitage Grapes; vintage 1869

MAPLESTONE, CHARLES, Ivanhoe, Heidelberg.

- 200 White Wine, light, made from large and small Reisling Grapes; vintage 1868

- 201 Red Wine, light, made from Hermitage Grapes; vintage 1870

POHL, CARL, Strathfieldsaye, near Sandhurst.

- 202 White Wine, full-bodied, made from Verdelho Grapes; vintage 1871

- 203 Red Wine, full-bodied, made from Hermitage Grapes; vintage 1871

- 204 White Wine, full-bodied, made from Verdelho Grapes; vintage 1870

- 205 Red Wine, full-bodied, made from Hermitage Grapes; vintage 1869

- 206 Red Wine, full-bodied, made from Hermitage Grapes; vintage 1869

SCHROEDER, EHRENFELD, Chinaman's Creek, Castlemaine.

- 207 White Wine, full-bodied, made from Reisling Grapes; vintage 1871

- 208 White Wine, full-bodied, made from Chasselas Grapes; vintage 1870

- 209 Red Wine, full-bodied, made from Hermitage and Carbinet Grapes; vintage 1870

## SCHMIDT, FRANZ, Berwick.

- 210 White Wine, full-bodied, made from Reisling Grapes ;  
vintage 1866

## SMITH, GEORGE S., Wahgunyah.

- 211 Red Wine, sweet, made from Muscatel and Shiraz Grapes ;  
vintage 1869.

## TROUETTE AND BLANCHPIED, Great Western.

- 212 Red Wine, full-bodied, made from Black Cluster Grapes ;  
vintage 1871

## VETTLER, JOHN, Echuca.

- 213 White Wine, light, made from White Morillion Grapes ;  
vintage 1871

- 214 White Wine, light, made from Reisling Grapes ; vintage  
1871

- 215 White Wine, light, made from Gouais Grapes ; vintage  
1871

- 216 Red Wine, made from Hermitage Grapes ; vintage 1870

- 217 Red Wine, full-bodied, made from Grenache Grapes ;  
vintage 1870

- 218 Red Wine, full-bodied, made from Carbinet Sauvignon  
Grapes ; vintage 1871

## WEBER, JACOB, Leigh Road.

- 219 Red Wine, full-bodied, made from Hermitage Grapes ;  
vintage 1871

## CLASS 2.—SPIRITS.

## CASTELLA, HUBERT DE, Yering.

- 220 Brandy

### DIVISION III.—SCIENTIFIC INVENTIONS AND NEW DISCOVERIES.

#### INTERNATIONAL EXHIBITION, COMMISSIONERS OF, Melbourne.

- 221 Abstract of English and Colonial Specifications relating to  
the Preservation of Food

- 222 Transactions and Proceedings of the Royal Society of  
Victoria

- 223 Abstracts and Specifications of Patents in Victoria

- 224 Patents and Patentees in Victoria. 5 vols.

## DIVISION IV.—RAW PRODUCE.

### SECTION I.—LEATHER.

DAVIES, E., & SON, Weston-street, Brunswick.

225 Tanned and Curried Calfskins

FOX, JOHN, & CO., Yarra Bank, Emerald Hill, Melbourne.

226 White Leather for Saddlery

MICHAELIS, HALLENSTEIN & CO., 30 Lonsdale-street East,  
Melbourne.

227 Side of Crop Leather

228 Butt Leather

229 Side of Kip Leather

230 Side of Black Harness Leather

231 Side of Brown Harness Leather

232 Large, medium, and small Calfskins

233 Side of Waggon Leather

234 Black Kangaroo Leather

235 Brown Kangaroo Leather

236 Cordovan Leather

### SECTION 2.—WOOL.

CURRIE, J. L., Larra, Lismore.

237 Merino Wool (ewe), about 350 days' growth

DOWLING, THOMAS, Jellalabad, Darlington.

238 Fleeces (Ewe) Wool, hot-water washed, 350 days' growth

GOLDSBROUGH, R., & CO., Bourke-street West, Melbourne.

239 Fleece Wool, washed, from the Western District of Victoria

240 Fleece Wool, washed, from the Western District of Victoria

241 Fleece Wool, washed, from the Western District of Victoria

242 Lambs' Wool, washed, from the Murray District

243 Fleece Wool, washed, from the Western District of Victoria

244 Fleece Wool, washed, from the Murray District

245 Fleece Wool, washed, from the Western District of Victoria

246 Fleece Wool, washed, from the Western District of Victoria

247 Fleece Wool, greasy, from the Murray District

248 Fleece Wool, greasy, from the Murray District

249 Fleece Wool, greasy, from the Western District of Victoria

250 Fleece Wool, greasy, from the Upper Murray District

ROBERTSON, A. S., Geelong.

- 251 Merino Wool, bred in-and-in for 15 years, on the dry plains  
of Lismore
- 252 Sample Case of Merino Wool, ditto
- RUSSELL, THOMAS, Wurrook, Rokewood.
- 253 Fleece Wool, from young sheep, skirted in grease
- RUSSELL, PHILIP, Carngham.
- 254 Wether Wool, hot-washed
- RUSSELL, THOMAS, & CO., Barunah Plains, Hesse.
- 255 Fleece Wool, hot-water washed, 375 days' growth

SECTION 3.—WOOD.

INTERNATIONAL EXHIBITION, COMMISSIONERS OF,  
Melbourne.

- 256 Myrtlewood
- 257 Sassafras Wood
- 258 Dogwood
- 259 Section of Mountain Ash, from the Black Spur, Watts River
- 260 Pepper Tree
- 261 Victorian Blackwood
- 262 Long Wattle Bark
- 263 Ground Wattle Bark
- 264 Blackwood Cabinet, for Sewing Machine, manufactured by  
Alcock & Co., Melbourne

INDUSTRIAL AND TECHNOLOGICAL MUSEUM,  
Melbourne.

- 265 Eucalyptus Globulus, or Blue Gum
- 266 Eupomatia Laurina
- 267 Eucalyptus Stuartiana, or White Gum
- 268 Hedycarya Cunninghamii
- 269 Eucalyptus Obliqua, or Stringy Bark
- 270 Eucalyptus Mellidora, or Box
- 271 Eucalyptus Fissilis, or Messmate
- 272 Acacia Melanoxylon, or Blackwood
- 273 Aster Argophyllus, or Musk
- 274 Eucalyptus Rostrata, or Red Gum
- 275 Eucalyptus Sideroxylon, or Iron Bark
- 276 Acacia Implexa
- 277 Eucalyptus Albens, or White Box
- 278 Eucalyptus Corymbosa, or Bloodwood
- 279 Eucalyptus Goniocalyx, or Spotted Gum-tree

- 280 Eucalyptus Longifolia  
 281 Tristama Laurina  
 282 Santalum Acuminatum, or Quandong  
 283 Exocarpus Cupressiformis, or Native Cherry  
 284 Aster Argophyllus, or Musk  
 285 Casurina Suberosa, or Weeping Sheoak  
 286 Fagus Cunninghamii, or Native Beech  
 287 Callitris Verucosa, or Desert Pine Cypress

---

SECTION 4.—ORES AND COAL.

CLASS 1.—ORES.

COSTERFIELD GOLD AND ANTIMONY COMPANY,  
 52 Elizabeth-street, Melbourne.

- 288 Sulphide of Antimony, from the Costerfield Mine  
 289 Oxide of Antimony, from the Costerfield Mine

MAJOR, JAMES, 82 Collins-street West, Melbourne.

- 290 Iron Ore and Iron manufactured from the Ore, by the  
 Ilfracombe Iron Company

MINING DEPARTMENT, Melbourne.

- 291 Galena from the Buchan  
 292 Antimony from Whroo  
 293 Iron Ore, Royal Park, Melbourne

UNITED OVENS GOLD AND TIN MINING COMPANY.

- 294 Tin Ore  
 295 Statistics of the United Ovens Gold and Tin Company's Mine

CLASS 2.—COAL.

MINING DEPARTMENT, Melbourne.

- 296 Coal from Cape Patterson

---

SECTION 5.—MINERALOGICAL AND GEOLOGICAL  
 SPECIMENS.

AJAX GOLD MINING COMPANY, Castlemaine.

- 297 Samples of Quartz from the Ajax Mine

- BAND OF HOPE AND ALBION CONSOLS COMPANY,  
Ballarat.
- 298 Washdirt from No. 4 shaft, 220 feet from the surface
- 299 Quartz from No. 4 shaft, 300 feet from the surface
- 300 Statistics of the Band of Hope and Albion Consols Mine
- BRACHE, JACOB, Collins-street West, Melbourne.
- 301 Description of the Eldorado Gold and Tin Mines, Beechworth
- 302 Transactions of the Mining Institute of Victoria
- GREAT EXTENDED HUSTLER'S REEF QUARTZ MINING  
COMPANY, Sandhurst.
- 303 Auriferous Quartz taken from a depth of 330 feet below the surface
- 304 Statistics of the Great Extended Hustler's Reef Company's Mine
- HOPE MINING COMPANY, Wood's Point, Gipps Land.
- 305 Average samples of Quartz as raised from the Mine
- 306 Samples of Quartz, Antimony, Auriferous Pyrites, Granite and Diorite
- 307 Statistics of the Hope Mining Company's Mine
- INTERNATIONAL EXHIBITION, COMMISSIONERS OF,  
Melbourne.
- 308 Facsimiles of the Nuggets "Welcome" and "Lady Barkly"
- MINING DEPARTMENT, Melbourne, per R. Brough Smyth,  
F.G.S., Secretary for Mines.
- Geological Specimens, Tertiary or Cainozoic Group.*
- 310 Fossils and Rocks from the Upper Tertiary or Pliocene formation, from the vicinity of Melbourne
- 311 Fossils and Rocks from the Upper Tertiary or Pliocene formation, from the Royal Park, near Melbourne
- 312 Fossils and Rocks from the Upper Tertiary or Pliocene formation, from the leaf beds of Daylesford
- 313 Fossils and Rocks from the Upper Tertiary or Pliocene formation, from the vicinity of Melbourne
- 314 Fossils and Rocks from the Middle Tertiary or Miocene formation, from the neighbourhood of Geelong
- 315 Fossils from the Lower Tertiary (Oligocene) formation, from near Schnapper Point
- Secondary or Mesozoic Group.*
- 316 Fossils and Rocks from the Oolitic (carbonaceous) formation, from Strzelecki's Range

- 317 Rocks from the Oolitic (carbonaceous) formation, from Western Point

*Primary or Palæozoic Group.*

- 318 Rock from the Upper Palæozoic (carboniferous) formation, from Mount William  
 319 Rock from the Upper Palæozoic (carboniferous) formation, from Mount Abrupt  
 320 Rock from the Devonian formation, from Buchan, Gipps Land  
 321 Fossils and Rocks from the Upper Silurian formation, from the Upper Yarra  
 322 Fossils and Rocks from the Upper Silurian formation, from the vicinity of Melbourne  
 323 Fossils and Rocks from the Lower Silurian formation, from Daylesford  
 324 Fossils and Rocks from the Lower Silurian formation, from Sandhurst

*Crystalline Group.*

- 325 Specimens from the Crystalline Rocks, or Metamorphic. From Gipps Land

*Igneous and Plutonic Group.*

- 326 Rocks from the Newer Volcanic formation. From the vicinity of Melbourne  
 327 Rocks from the Older Volcanic formation. From the vicinity of Melbourne  
 328 Rocks from the Trap formation. Near Geelong  
 329 Rock from the Granite formation. From Clunes  
 330 Rock from the Granite formation. From Maryborough  
 331 Rock from the Granite formation. From Beechworth  
 332 Rock from the Granite formation. From Beechworth  
 333 Syenitic Granite, from the Granite formation of Gabo Island  
 334 Sketch of a new Geological Map of Victoria

*Mineralogical Specimens.—Gold.*

- 335 Auriferous Quartz. Quartz of this character is called by the miners "honeycomb quartz." From the North Star Mine, Energetic Reef, Lauriston. The specimen was got from the water line at a depth beneath the surface of 110 feet. The reef was 22 feet in width, and averaged a yield of 1 oz. 10 dwts. of gold to the ton of quartz  
 336 Auriferous Quartz, with Iron Pyrites. From the Golden Bar Reef, which is 18 inches in width at the surface, and 4 feet wide at 50 feet in depth. This reef is situated in Camp Creek, two miles from Russell's Creek

- 337 Auriferous Quartz and Iron Pyrites. Got from a lode 8 feet in width, which is situated near Mount Egerton
- 338 Auriferous Quartz Tailings. From Castlemaine
- 339 Gold and Native Copper. Portion of a sample obtained from a dish of dirt taken out of the Egerton Consols shaft, at a depth of 290 feet from the surface. From Mount Egerton
- 340 Auriferous Arsenical Pyrites. From the Great Extended Hustler's Reef Company's Mine at Sandhurst. It was got from 500 feet in depth beneath the surface. From 70 tons of this ore 173 ozs. of gold were extracted. The gold was very fine
- 341 Auriferous Slate and Iron Pyrites, and Galena. When the reef quartz "tails out," this formation takes its place between the walls of the vein. Depth from the surface at which the specimen was obtained, 240 feet; width of the formation, 3 feet 6 inches; average yield of gold per ton, 5 ozs. 12½ dwts. From the Great Extended Eagle Company's mine, Eaglehawk, Sandhurst
- 342 Auriferous Cement, or Washdirt. From the Alston and Weardale Company's mine at Ballarat
- 343 Auriferous Cement. Found at from 60 to 70 feet beneath the surface, overlying "pipeclay" in wet ground, at Talbot
- 344 Auriferous Iron Pyrites. It occurs in seams of the Silurian slate rock, in a similar manner to quartz veins or leaders, and in the drift overlying the bed-rock. It is said to be found in large quantities to the south of the prospecting claim at Foster, Stockyard Creek. An assay of it for gold gave results equal to 19 dwts. 4 grs. per ton.

*Silver.*

- 345 Chloro-Bromide of Silver. From St. Arnaud
- 346 Argentiferous Arsenical Pyrites. From Eldorado, near Beechworth
- 347 Argentiferous Galena. It contains 18 ozs. 5 dwts. 20 grs. of silver per ton of ore. From a lode situated at the junction of the Deduc River and the Snowy River, Gipps Land
- 348 Argentiferous Galena and Quartz. An assay of the ore gave 79 per cent. of lead, and 27 ozs. 8 dwts. of silver per ton. Obtained from an extensive reef near Berlin at 20 feet in depth. The strike in the reef is east and west.
- 349 Argentiferous Sulphide of Lead. One portion of the sample yielded 23 ozs. 7 dwts. 18 grs. of silver per ton; another

portion gave 7 ozs. 1 dwt. per ton. From Buchan, Gipps Land

*Tin.*

- 350 Black Oxide of Tin and Iron Pyrites. These minerals occur on the faces of the specimens, which show sections of thin stanniferous veins. From the vicinity of Beechworth
- 351 Tin Ore in decomposed granite. From Beechworth
- 352 Tin Ore. Obtained from the bed of the Koetong Creek, upper Murray River
- 353 Stanniferous Washdirt. From the Koetong Creek, upper Murray River
- 354 Tin Ore, with which is associated Gold and Tourmaline. From the bed of the Latrobe River

*Copper.*

- 355 Native Copper in Silurian Shale. The Copper occurs in nearly all the faces of the joints and fissures of the rock, and especially where there are thin veins of quartz. It is probably derived from the decomposition of Copper Pyrites. There are traces of Oxide and Carbonate of Copper. Got from 500 feet in depth beneath the surface; 30 feet of shale of a similar character to this sample have been cut through. The strike of the shale is about 20° west of north; it has scarcely any underlie. From the Flying Scud Mine, Mount Egerton
- 356 Green and Blue Carbonate of Copper. From the Thomson River Copper Mine, Gipps Land

*Antimony.*

- 357 Antimony Regulus. From Heathcote
- 358 Antimony, Native. From a lode at Maldon
- 359 Sulphide of Antimony. From Costerfield, near Heathcote
- 360 Sulphide and Oxide of Antimony. From Blackwood
- 361 Sulphide and Oxide of Antimony. From Balaclava Hill, Whroo
- 362 Antimony Ore. From an auriferous lode. It was got at 70 feet beneath the surface; the average width of the vein was 12 inches, depth of the water level about 150 feet; the strike of the lode was north and south. From the Inifer Reef, Coy's diggings, near Whroo
- 363 Cervantite (Oxide of Antimony). From a lode at Coimadai
- 364 Oxide of Antimony. Broken from the reef at a depth of 50 feet from the surface. This is an antimony reef, and it strikes east and west. It is irregular in width, being sometimes as much as 2 feet and diminishing to a mere

- thread. From Stockyard Reef, Whroo. (Attached to the Antimony Ore is some of the bounding rock of the vein).
- 365 Ferruginous Antimony Ochre. Upon assay it gave 31·8 per cent. of antimony. It was got from the foot wall of the lode in the 60 feet level at Ringwood, near Melbourne
- 366 Antimony and Iron Ores in Quartz. The greater part of the Antimony is in the crystalline parts of the specimen and in the joints. From a reef which contains gold. The specimen was got from 87 feet in depth in a cross reef at the Antimony Mines of Ringwood. The lode was 18 inches in thickness

*Zinc.*

- 367 Blende (Sulphide of Zinc), with small crystals of Iron Pyrites. An assay for silver yielded results equal to 3 ozs. 5 dwts. of silver per ton. From the 400 feet level in the Western Reef, Chrysolite Hill, St. Arnaud. This Reef is 4 feet in width

*Lead.*

- 368 Galena (Sulphide of Lead) with Bleischweif (Antimonial Galena). The purer portion of the sample gave about 72 per cent. of Lead. The poorer part containing most antimony, 65 per cent. of lead, and 7 ozs. of silver per ton of ore. The other portion of the sample gave 63 per cent. of lead and 15 ozs. of silver per ton of ore. From Gipps Land
- 369 Galena. From the Buchan Lead and Silver Mine at Buchan, Gipps Land
- 370 Galena. Sulphide of Lead, with Sulphide of Antimony. One part of the sample yielded 23 ozs. 7 dwts. 18 grs. of silver per ton and 48 per cent. of lead; another portion yielded 20 per cent. of lead and 7 ozs. 1 dwt. of silver per ton of ore. From Buchan
- 371 Galena, with Pyrites, from a lode at Percydale. The reef is from 3 feet to 3 feet 6 inches in width, and is well defined. Its strike is N. 35 deg. W., and its dip about 63 deg. S.W. An analysis of a sample of ore from this vein gave—Lead, 20 per cent.; iron, 30 per cent.; sulphur, 41 per cent.; zinc, 3 per cent., &c.

*Cobalt.*

- 372 Cobalt, with Manganese Ore. From Gipps Land

*Manganese.*

- 373 Manganese Ore. Variety of Wad. A qualitative analysis gave manganese, iron, alumina, lime, and baryta. In

the purer portions the manganese amounts to 40 per cent. of the whole, whilst in other parts the composition is that of an earthy brown iron ore, with only traces of Manganese. From a vein at Clifton Creek, about five miles from Bairnsdale, the lode appears, to judge from surface indication, to be about 3 feet or 3 feet 6 inches in thickness

- 374 Black Oxide of Manganese. From Chiltern, where it is said to be plentifully distributed through the *débris* of the gold workings on the Chiltern *lead*
- 375 Black Oxide of Manganese. From Skipton Diggings, near Linton

*Molybdenite.*

- 376 Molybdenite (Sulphuret of Molybdenum). From Gipps Land

*Iron.*

- 377 Micaceous Specular Iron Ore. Obtained from within a mile of the north-west end of Lake Tyers, in Gipps Land. It is said to occur in immense quantities
- 378 Micaceous Iron Ore, with Quartz. From Mount Nowa Nowa, Boggy Creek, Gipps Land
- 379 Iron Ore, from the Royal Park, near Melbourne
- 380 Titaniferous Iron Sand. The sand is found to contain small crystals of sapphires, zircons, &c. From the Upper Yarra
- 381 Titaniferous Iron Sand. It contains small fragments of zircons, topaz, and almandine garnets. From Turner's Creek, near Sassafras Creek
- 382 Titaniferous Iron Sand, containing small fragments and crystals of sapphire, corundum, fibrolite, topaz and quartz. From a creek in the Dandenong Ranges, about 22 miles distant from Melbourne
- 383 Titaniferous Iron Ore, often mistaken for Stream Tin by inexperienced miners. From Spring Creek, Beechworth
- 384 Magnetic Iron Sand. It contains about 50 per cent. of iron. From the Whipstick, near Sandhurst
- 385 Magnetic Iron Sand (waterworn). Some of the fragments are strongly magnetic, having the power of attracting one another. Got from a puddler's tailings heap, in the alluvial gold-mining workings at Kangaroo Flat, Sandhurst
- 386 Iron Pyrites in slate and quartz, from Sandhurst
- 387 Iron Pyrites in slate, from Fryer's Creek
- 388 Vivianite (Phosphate of Iron), from Sarsfield, Gipps Land.

- 389 Pharmacosiderite, obtained from the centre of Robinson's Reef, at Clunes, which reef is 6 feet in thickness, at a depth of 300 feet
- 390 Wolfram, from near Linton

*Coal.*

- 391 Coal from Strzelecki's Ranges
- 392 Coal found by a prospector near Brandy Creek, Pakenham
- 393 Coal from the Hoddle Range, near Stockyard Creek

*Lignite.*

- 394 Lignite Shale. When strongly heated the shale takes fire and burns with a yellow, smoky flame, and leaves a buff-coloured ash. An analysis gave—

Volatile matter	...	...	...	...	31.82
Carbon	...	...	...	...	8.87
Ash	...	...	...	...	59.31

---

100.00

The water is included in the volatile matter. Obtained from near Campbelltown, Glenlyon, at 20 feet beneath the surface

*Slates.*

- 395 Roofing Slate, containing graptolites. Found at about 20 feet in depth, and about 30 feet above the Gisborne Creek. From a Gisborne quarry

*Magnesite.*

- 396 Magnesite (Carbonate of Magnesia). From the Whipstick, near Sandhurst
- 397 Magnesite, from Sandhurst

*Miscellaneous Minerals.*

- 398 Silicate of Alumina. Found overlying the drift and basalt. From the Mysterious Lead, parish of Amherst
- 399 Epsomite (Sulphate of Magnesia), from the banks of Goodman's Creek, about three miles from Bacchus Marsh
- 400 Aragonite in Basalt, from Malmsbury
- 401 Aragonite in Basalt, from the quarries at Richmond
- 402 Sapphires, Garnets, Agates, Carnelian, and Opal, from the head of the Worri Yaloak Creek, near Lilydale
- 403 Zircons, Tin Ore, and Quartz Sand, with Titaniferous Iron Sand, from Dry Diggings, near Daylesford
- 404 Zircons, Topaz, and Almandine Garnet fragments in Titaniferous Iron Sand, from Turner's Creek, near Sassafras Creek

- 405 Sapphires, Zircons, Schorl, &c., from the Magenta tunnel, Italian Hill, Daylesford. The sample was obtained at 130 feet below the surface and 2000 feet from the mouth of the tunnel
- 406 Zircons, Sapphires, &c., from the Ovens and La Trobe Rivers

*Fac-similes of Gold Nuggets found in Victoria.*

- 407 The "Beauty" Nugget, weighed 242 ozs.  $17\frac{1}{4}$  dwts. It was discovered at a depth of 9 feet from the surface in Kangaroo Gully, Bendigo, in the year 1858. The gold was  $22\cdot2\frac{7}{8}$  carats fine
- 408 The "Platypus" Nugget weighed 377 ozs. 6 dwts. It was found in Robinson Crusoe Gully, Bendigo, in a pillar of earth of a deserted claim. The claim was situated in shallow alluvium, and the nugget was discovered in March, 1861. The gold was  $22\cdot1\frac{1}{8}$  carats fine
- 409 The "Viscount Canterbury" Nugget was found in John's Paddock, Berlin Diggings, at a depth of 15 feet from the surface, on the 31st May, 1870. It weighed 1105 ozs. The gold was 23·3 carats fine
- 410 The "Viscountess Canterbury" Nugget was found on the 3rd of October, 1870, at Berlin. It was discovered at 6 feet 6 inches beneath the surface, and weighed 884 ozs. 10 dwts. The gold was  $23\cdot2\frac{3}{8}$  carats fine
- 411 Nugget (not named) found at Creswick, in the Key Company's Mine. It weighed 32 ozs., and was found in January, 1871
- 412 The "Precious" Nugget was found on the 5th of January, 1871, by a party of Chinese. It weighed 1621 ozs. 2 dwts. The gold was  $23\cdot0\frac{1}{8}$  fine. The nugget was discovered at 12 feet beneath the surface. Distinct impressions of quartz crystals cover its surface. It was found in Catto's Paddock, Berlin
- 413 The "Kum Tow" Nugget weighed 718 ozs. 5 dwts. It was found on the 17th April, 1871, in Catto's Paddock, Berlin Diggings, at a depth of 12 feet 6 inches below the surface. It was found by a party of Chinese. The gold was 23·3 carats fine
- 414 The "Needful" Nugget was discovered at 12 feet beneath the surface, in Catto's Paddock, Berlin Diggings, on the 10th May, 1871. It weighed 246 ozs. 16 dwts., and the gold was 23·3 carats fine
- 415 Nuggets (not named) found in Broomfield's Gully, Creswick, on the 12th and 8th August, 1872. They weighed

- respectively 46 ozs. 15 dwts. and 24 ozs. 3 dwts., and were got at 100 feet beneath the surface
- 416 Nugget (not named) found at Creswick in the Red Streak Lead on the 31st August, 1872. It was discovered at 180 feet below the surface, and weighed 30 ozs. 1 dwt.
- 417 The "Welcome" Nugget was found on the 11th June, 1858, at 180 feet from the surface, at Bakery Hill, Ballarat. It weighed 2195 ozs.

ROSALES, HENRY, Walhalla, Gipps Land.

- 418 Specimens of Quartz from the Walhalla Gold Mining Company
- 419 Photograph and Statistics of the Walhalla Gold Mine
- 420 Specimens of Clay, Slate, Diorite, Auriferous Quartz, &c.

ROSE OF DENMARK GOLD MINING COMPANY,  
Gaffney's Creek.

- 421 Specimens of Diorite, Auriferous Quartz, Slate, and Bitterspar from the Rose of Denmark Company's Mine

SECTION 6.—NATURAL HISTORY.

FRENCH, CHARLES, Melbourne.

- 425 Victorian Wood-boring Insects (Coleoptera) collected near Melbourne
- COHN & CO., 8 Hawke-street, West Melbourne.
- 426 Fur Muffs and Collarets of Native Cat, Blue Kangaroo, Brown Kangaroo, Emu, Grey Opossum, and Dyed Opossum Skins, manufactured by Cohn and Co.

NEILL, MRS. BLADEN, Melbourne.

- 426A Silk Cocoons, raised on the Murray, the produce of *Grain* from an old Italian race, found to be free from disease

INTERNATIONAL EXHIBITION, COMMISSIONERS OF,  
Melbourne.

- 427 Collection of Victorian Ferns
- 428 Lyre Birds' Tails
- 429 Proceedings of the Acclimatisation Society of Victoria

MOSS, GEORGE, Bourke-street West, Melbourne.

- 430 Skins of the Brush Kangaroo, Common Kangaroo, Native Bear, blue Chinchilla Opossum, black and white Native Cat, grey and white Native Cat, Mountain Wallaby, common Wallaby, and Bilbo
- 431 Blue Chinchilla Rug, prepared by G. Moss

## NATIONAL MUSEUM, TRUSTEES OF, Melbourne.

- 432 *Osphranter Rufus*, Gigantic Red Kangaroo, male and female  
 433 *Dasyurus Maculatus*, Native Cat, male  
 434 *Phascalomys Lasyorhinus*, Wombat  
 435 *Macropus Fuliginosus*, Sooty Kangaroo, male  
 436 *Macropus Ocydromus*, Kangaroo, female  
 437 *Halmaturus Walabatus*, Wallaby

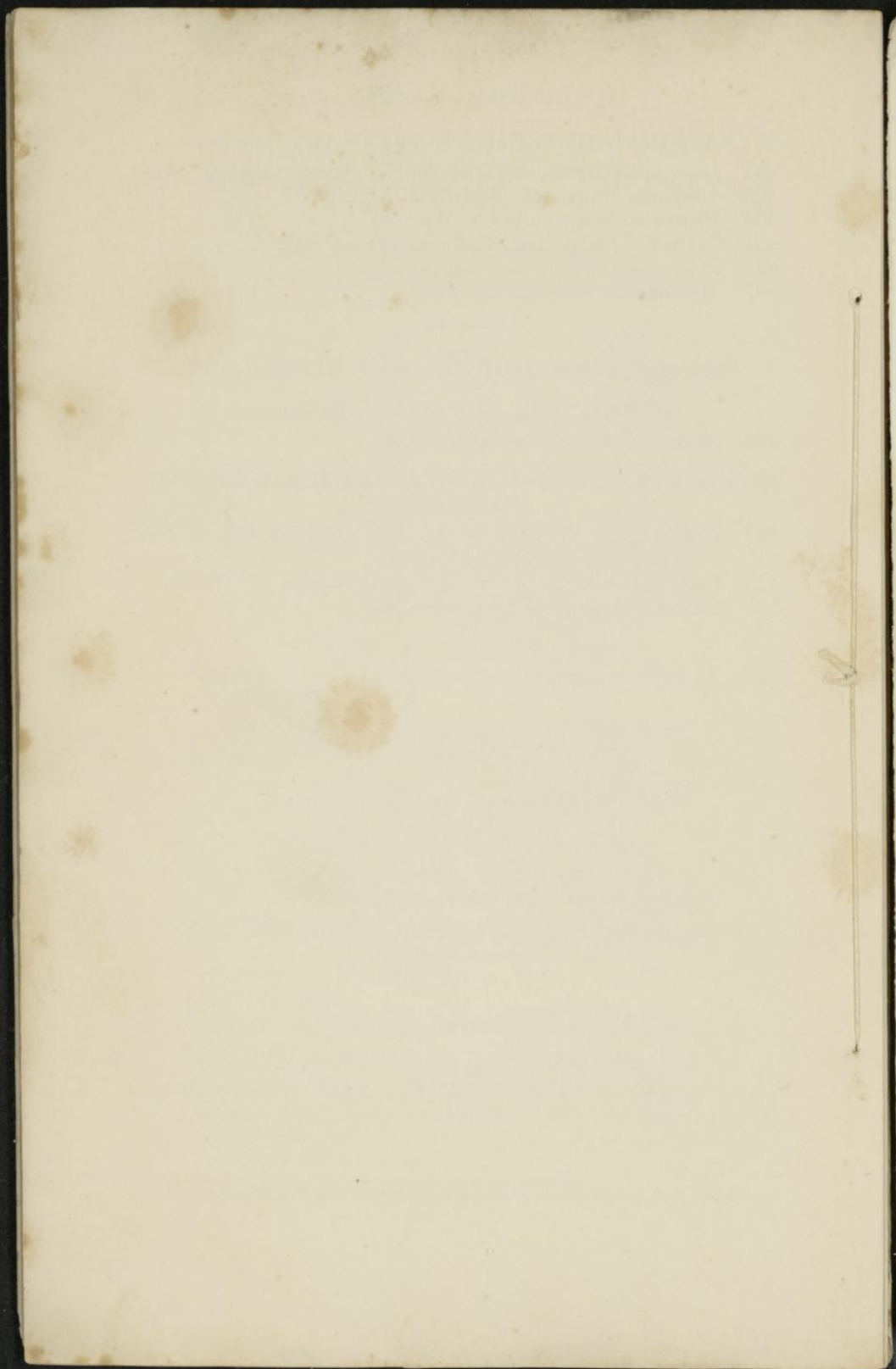
## SECTION 7.—ABORIGINES AND ETHNOLOGY.

DARKE, D. H., Rowena-street, Richmond.

- 438 Models of Aboriginal Weapons, &c.

INTERNATIONAL EXHIBITION, COMMISSIONERS OF,  
Melbourne.

- 439 Photographic Portraits of the Aboriginal Natives of Victoria, photographed by Walter  
 440 Casts of the Skulls of the Aboriginal Natives of Victoria  
 441 Charts of Aboriginal Languages, &c.



W. B. Inv.

№ 59.

TMW-Bibliothek



0024180 9

